



★ Elite ★

OWNERS INSTRUCTION MANUAL

137CM/54"

Sirocco

INSTALLATION
OPERATION
MAINTENANCE

CAUTION

READ INSTRUCTIONS CAREFULLY FOR SAFE
INSTALLATION AND FAN OPERATION. IF UNSURE CONSULT
A QUALIFIED ELECTRICIAN

SUITABLE FOR 230V/50 CYCLE ELECTRICAL SUPPLY
Enquiries on installing your fan please call our help line on

01959-564440

E-mail :

technical@fantasiaceilingfans.com



Safety Precautions

1. To ensure the success of the installation be sure to read the instructions and study the diagrams thoroughly before commencing.
2. All electrical work should only be undertaken after disconnection of the power by removing fuses or turning off the circuit breaker to ensure all pole isolation of the electrical supply. If you are in any doubt the services of a qualified electrician should be sought to ensure that all work is carried out in accordance with the I.E.E. Regulations, current good practice and other national and local electrical codes.
3. Make sure that your installation site will not allow the rotating fan blades to come into contact with any object and that there is a minimum clearance of 150mm (6") from the blade tip to the wall or ceiling. Please note that the bigger this clearance is the better the airflow from your fan will be. Ensure the blades are mounted at a minimum height of 2.3 meters (7'6") from the floor when the fan is installed.
4. The fixing point for the fan must be able to support a weight of ten times that of the net weight of the fan. Net weights can be found on the bottom of the unit's box. If you are mounting the fan to a ceiling junction box, the box and it's fixing must be able to support the moving weight of the fan and must not twist or work loose.
5. The fan must be earthed.
6. Do not connect the fan motor to a dimmer switch. This may give an unsatisfactory performance (motor hum) and cause damage to the motor.
7. It is not recommended that ceiling fans and gas appliances are operated in the same room at the same time.
8. The fan must be turned off and stopped completely before reversing the fan direction. This will prevent any damage to the motor of the unit or controller (if installed).
9. Do not insert anything into the fan blades while the fan is operating. This will damage the blades and upset the balance of the unit causing the unit to wobble.
10. After the fan is completely installed make sure that all connections are secure and tight to prevent any problems.
11. Because of the fan's natural movement, some connections may loosen. Check the support connections, brackets and blade attachments twice a year to make sure they are all secure. If they are loose tighten with a screwdriver. (It is not necessary to take the fan down from the ceiling)

Note : The important safeguards and instructions given in this manual are not meant to cover all possible conditions and situations that may occur. It must be understood that common sense, caution and care are factors which cannot be built into any product. These factors must be supplied by the persons caring for and using the unit.

For installation advice, or in the unlikely event of damaged or missing parts please ring:

HELPLINE : 01959 564440
E-mail : technical@fantasiaceilingfans.com

Supplied Parts

- One fan DC motor assembly
- One hanger bracket fitted with terminal block and top rubber washers.
- One 6" drop rod & top canopy & boss cover
- One set of blade
- One screw-pack with balancing kit
- One installation booklet
- One set Remote control set
- One LED light kit

Tools and Materials Required

- Philips screwdriver
- Blade screwdriver
- Small electrical screwdriver
- Electrical pliers
- Step ladder
- Wiring supplies as required by current electrical practice
- Bulbs if a light fitting is fitted / to be fitted
- In-line crimps or other suitable connectors if an extension rod in excess of 760mm (30 inch) is to be fitted.

Before starting the assembly and installation of your fan please ensure the safety precautions have been read and understood.

Installation Difficulties, Missing or Damaged Parts

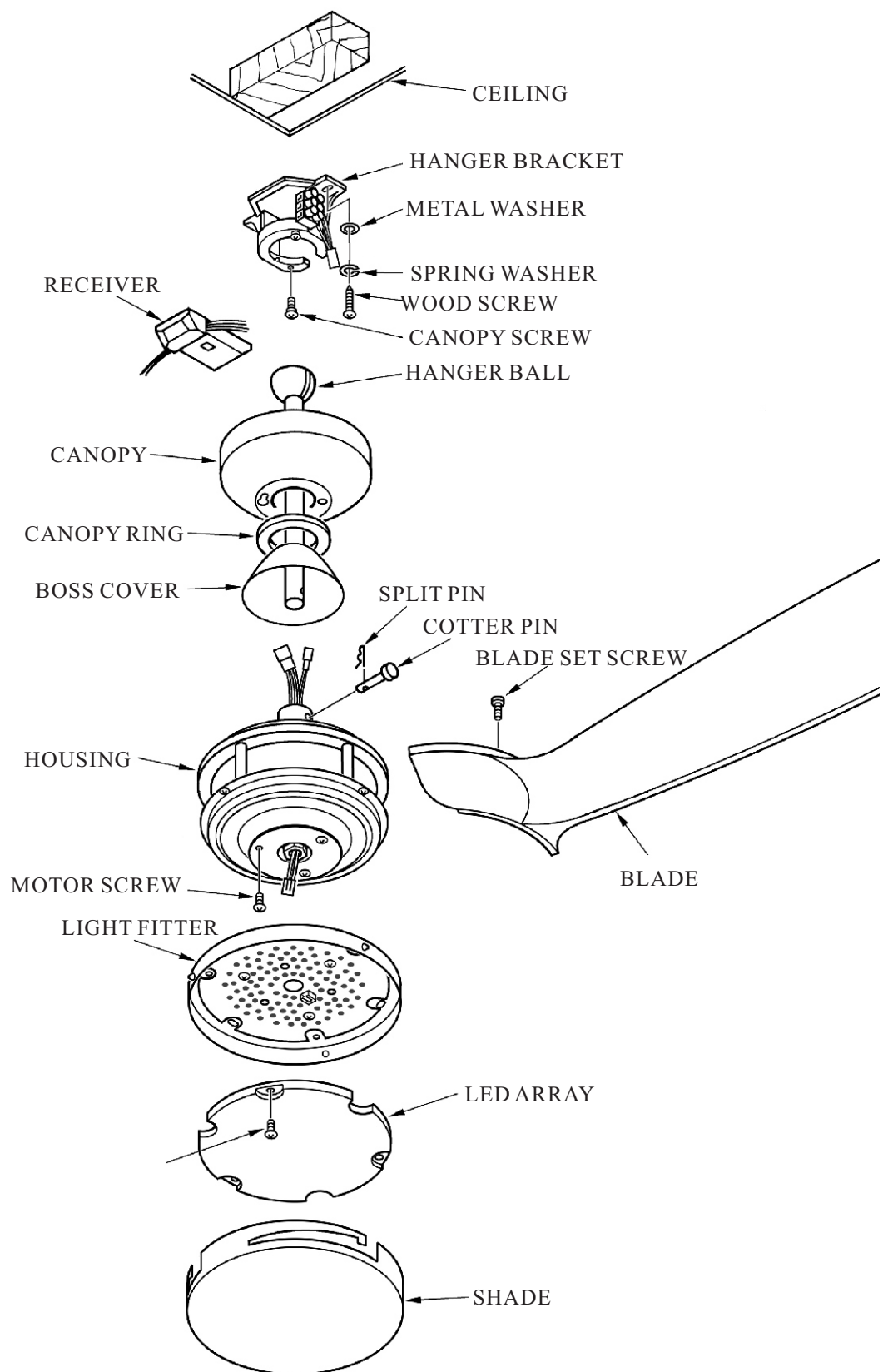
If you have any difficulty in installing your fan/light or if you are unfortunate enough to find that your fan has been dispatched with parts missing or damaged please contact our help-line on (01959 564440). We will be very pleased to provide help or forward replacements parts to you immediately.

In any communication with us please quote model reference, colour of the unit and the part missing or damaged.

HELPLINE
01959 564440

E-mail : technical@fantasiaceilingfans.com

Parts names and their relative positions



Installing the fan

All electrical work should only be undertaken after disconnection of the power by removing fuses or turning off the circuit breaker to ensure all poles isolation of the electrical supply.

Your fan is a drop rod fan (Picture A) In this situation the drop rod assembly is used to lower the fan down from it's mounting position slightly. Extension rods, ranging from 12" to 72", are available if you need to lower your fan further. (This is normally the case in conservatories or rooms with very high ceilings.)

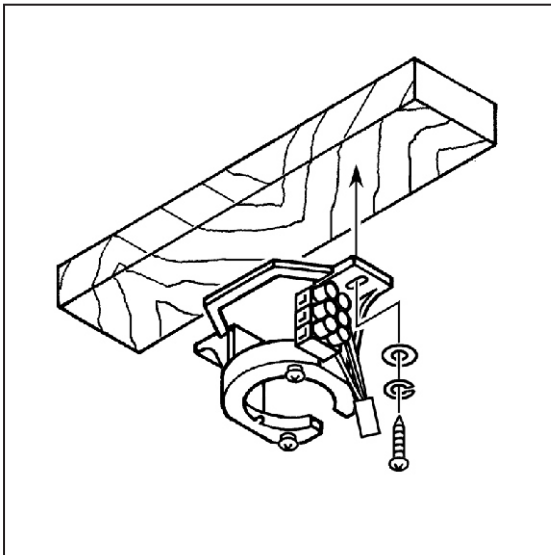


Picture A

The following steps will guide you to a successful installation:

1. Hanger bracket installation
2. Drop rod assembly
3. Assembly the blades
4. Installing LED light kit and glass
5. Remote control and Wiring instruction

1. Hanger bracket installation

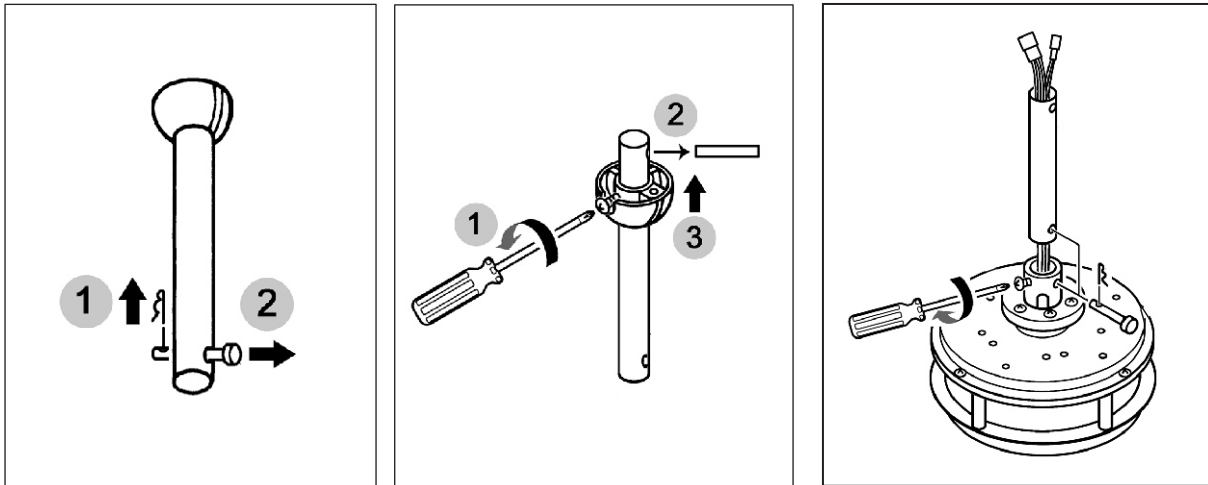


The hanger bracket should be screwed on to a firm flat surface. The fixing location must be able to withstand ten times the static weight of the fan. If you have any doubts as to the ability of your intended fixing location to be able to withstand this loading. Please contact our service help-line or another competent authority to advise you. In most situation two wood screws screwed into a wooden joist is more than adequate to support your ceiling fan.

The hanger bracket should be screwed onto the joist with the two wood screws provided. The washers provided should go in the following sequence:

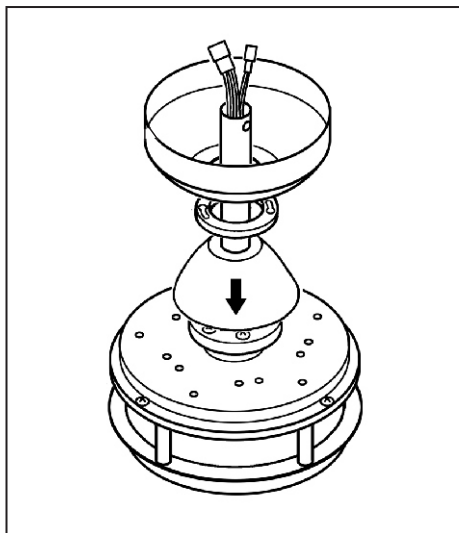
Screw head > spring washer > round washer > Hanger bracket > Ceiling. Screw the hanger bracket to the ceiling and make sure all connections are secure to prevent the fan from falling. Fixings must screw into a joist and not just the plasterboard. Loosen the two canopy screws from the hanger bracket.

2. Drop rod assembly



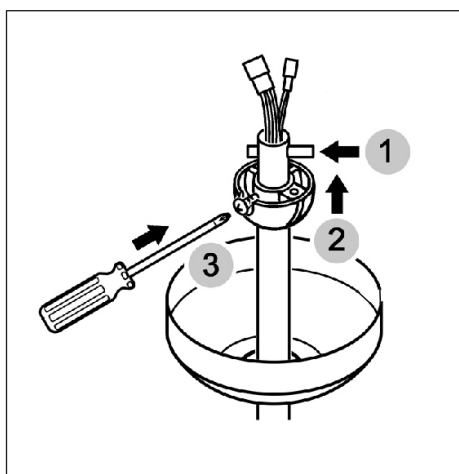
Remove the cotter pin and clevis pin from the bottom of the drop rod and the pin from hanger ball, and the pin from hanger ball. If a longer drop rod is going to be used transfer the ball joint and the earth wire to the longer rod.

Put the drop rod through the flared end of the top bottom and fix ring and boss cover and pass the electrical supply leads from the top of the motor through the drop rod until they exit at the top of the ball joint. Always ensure the rod passes through the canopy and bottom canopy before the rod is connected to the fan. If an extension rod longer than 30 inches is to be used, the cables will need to be extended in an appropriate way.



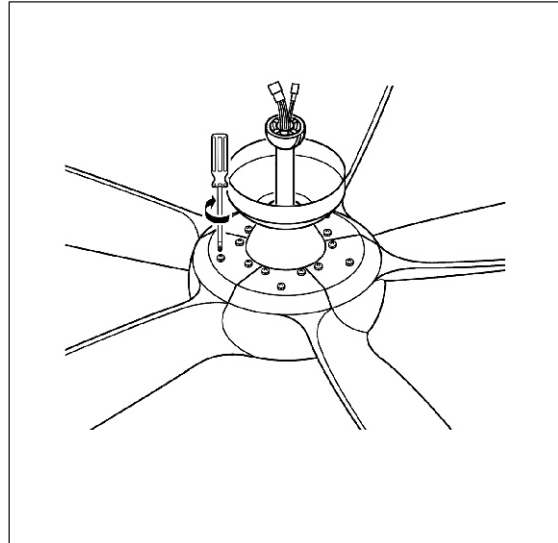
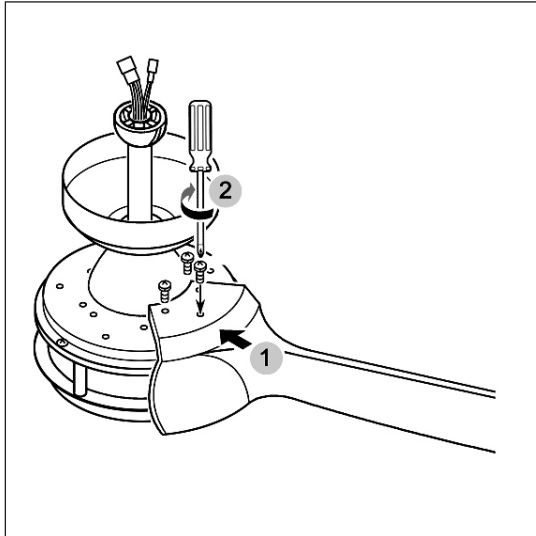
Loosen the drop rod set screws on the boss, which is on top of the motor and insert the drop rod into the drop rod boss on top of the motor casing. Turn gently to align the holes in the boss with those in the rod. Ease the cotter pin through the boss and the rod taking care not to pinch or damage any cables. Fix in place by replacing the split pin. Tighten all set screws at this point. This prevents the rod and the fan moving in relation to one and other. It also assists in maintaining a good earth continuity through the fan, which is important to the safety of the unit.

Failure to tighten the locking screws down may cause the motor to oscillate badly.



Put the hanger ball back on the drop rod after putting all the wires through the drop rod. Screw the hanger ball tightly so the fan does not wobble.

3. Assembled blades

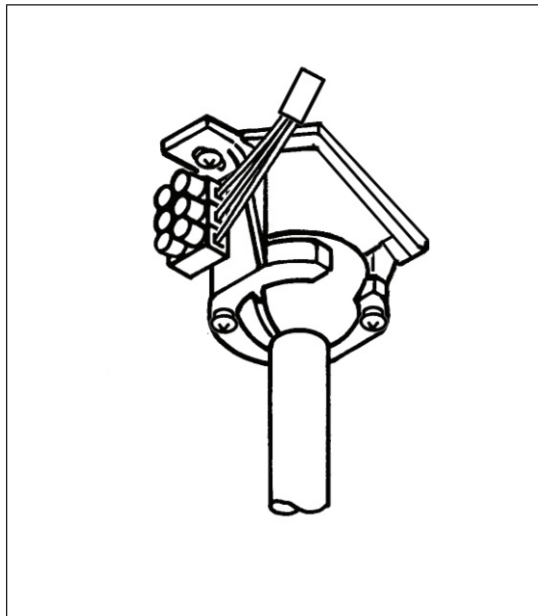


Carefully unwrap the blades, attaching the blades to the fan motor. Align the blade with the holes on top of motor. Use the screws and metal washers provided to connect them. The metal round washer should go on top the blade between the head of the screw and the surface of the blade.

IMPORTANT – The fan blades slot together using a locator point on each blade.

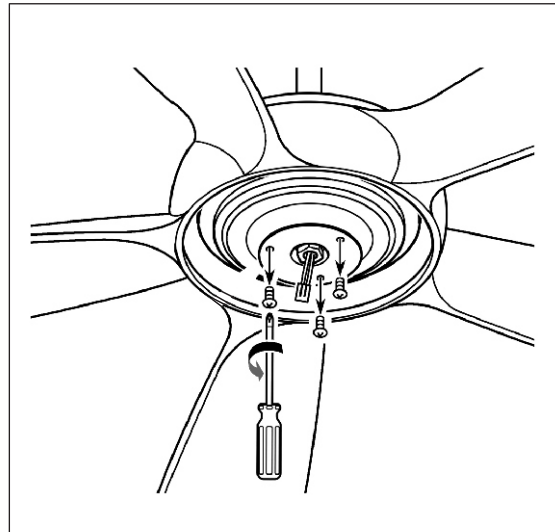
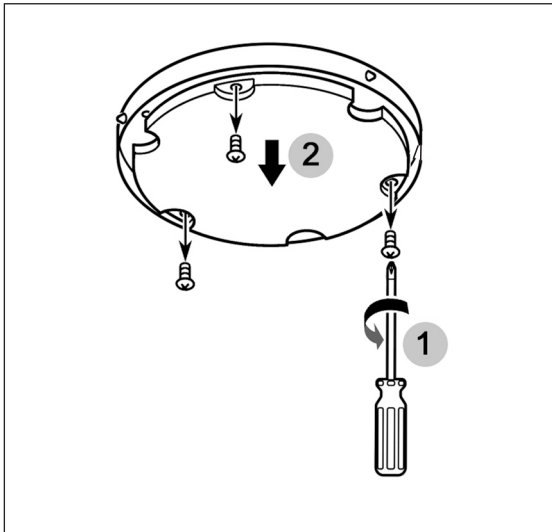
Take the first blade and attach it to the fan motor using the 3 screws and washers provided. **DO NOT FULLY TIGHTEN THE SCREWS.** This will be done when all 5 blades are attached to the fan motor.

Attach each blades in turn, ensuring that it sits snugly in the locator point. Once all 5 blades are attached and in their respective locator points, tighten all the screws fully.

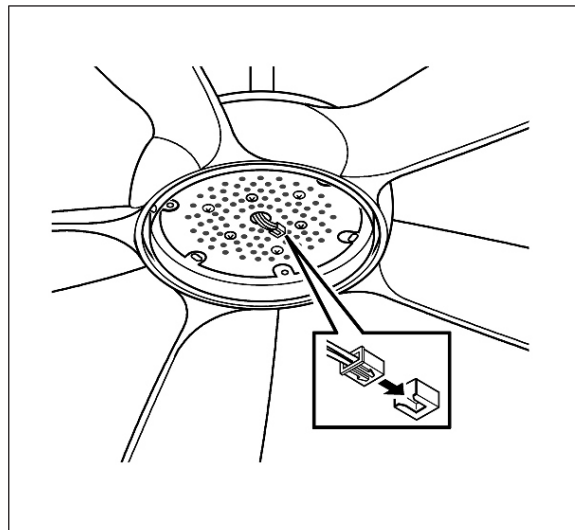
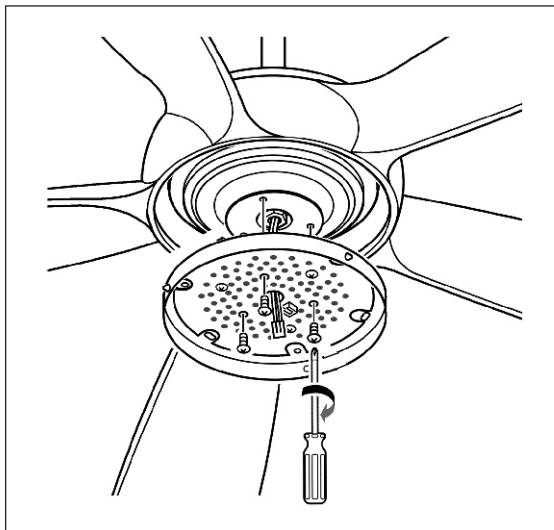


Carefully lift the fan and seat the down rod ball assembly on the hanger bracket. Be sure the groove in the ball is lined up with tab on the hanger bracket. Do not pinch wires between the ball and down rod assembly and hanger bracket.

4 . Install light fitting and shade

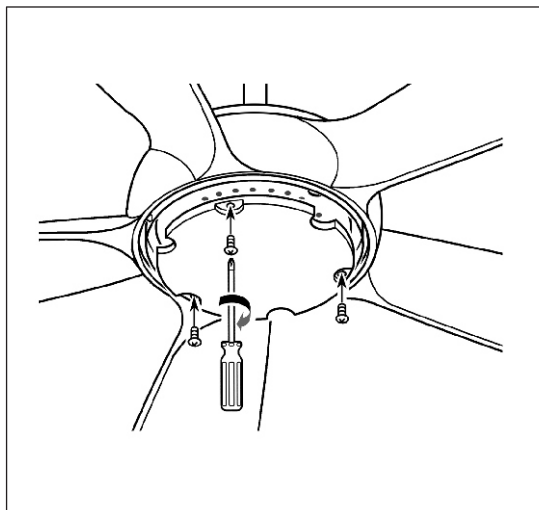


Remove lens from LED light kit. Completely remove one of the three provided screws on the small round plate under the motor, and loosen partially the other two screws.



To fasten the Light Fitting onto the small round plate, align the two keyhole slots on the light fitting to the partially loosened screws and twist the light fitting in place so that the fitting is held temporarily. Replace the removed screw to the small round plate, then tightly fasten the 3 screws to hold the light fitting securely.

Connect the push plug from fan to the push plug on the LED array.

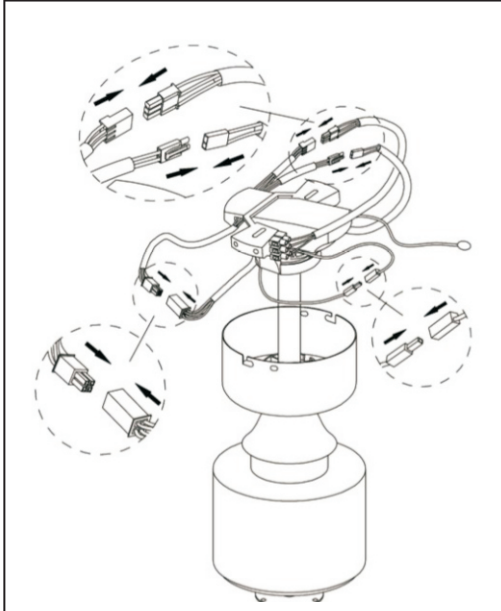


Replace the lens onto LED light kit with screws.

5. Remote control and Wiring instructions

WIRING INSTRUCTIONS : Before doing wiring, ensure that you have all pole disconnection of the electricity supply.

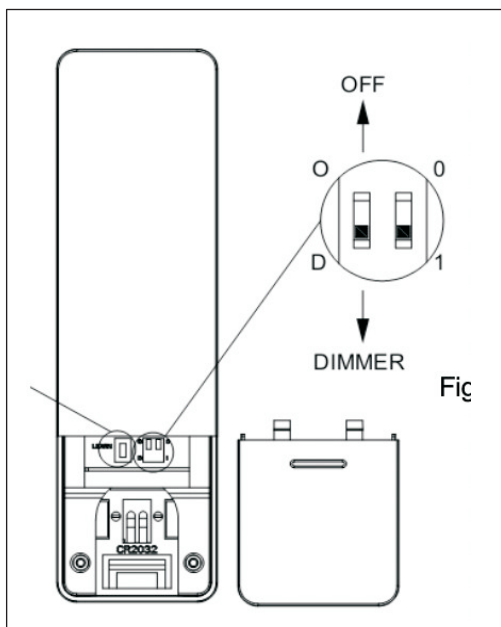
Your fan is supplied with a radio frequency remote control unit, and the fan does not have a pull switch for speed control, the fan can only be controlled by remote control. You can find the unit in the box. Please connect the wire and doing pairing program.



Put the receiver of remote control through hanger bracket (as picture).

Connect the A.C. power supply wire that come from the ceiling to the terminal block on the hanger bracket which is mark with label “L” & “N”. In most cases, RED / BLACK wire is LIVE is connected to “L” BROWN wire, BLACK / BLUE wire is NEUTRAL is connected to “N” BLUE wire.

Connect the 4 pin female push plug coming from the receiver with male push plug coming from the hanger bracket. Connect 4 pin male push plug from receiver with 4 pin female push plug from fan and connect 2 pin male push plug from receiver with 2 pin female push plug from fan for light kit.



IMPORTANT NOTE :

DIP SWITCH—0 & 1

All handsets and receivers are pre-set the same code “0” in the factory. You can operate the fan without doing learning pairing setting program after turn on the AC power.

But we recommend that you set an individual code for your fan. Please put dip switch from “0” to “1”. Please refer following step for pairing program setting, the AC power must be off before doing pairing program setting.

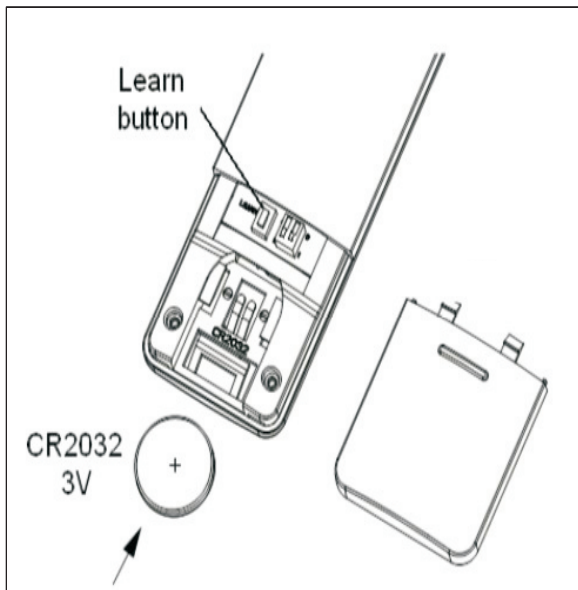
Please remember to install the battery into transmitter before operating the fan.

DIP SWITCH—O & D

This switch is for setup light kit on/off and dimmer, it is pre-set at “D” position in the factory for light kit on/off and dimmer available. You can change to put the switch to “O” position for light kit on/off function only, no dimmer.

“O” : Light – on/off only

“D” : Light – on/off and dimmer



LEARNING PAIRING SETUP:

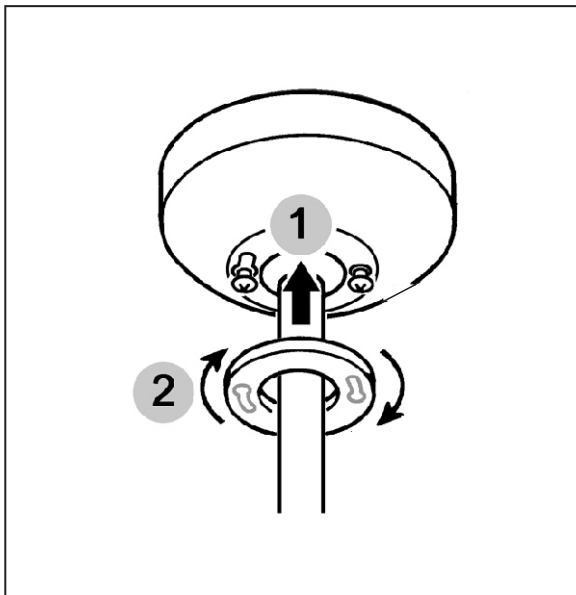
Please make sure the AC power is off and make sure the 0/1 dip switch is at “1” position before doing pairing

Turn on the power. Within 30 seconds push and hold the RED key for 5 seconds to pair the remote system.

Please refer to the left drawing.

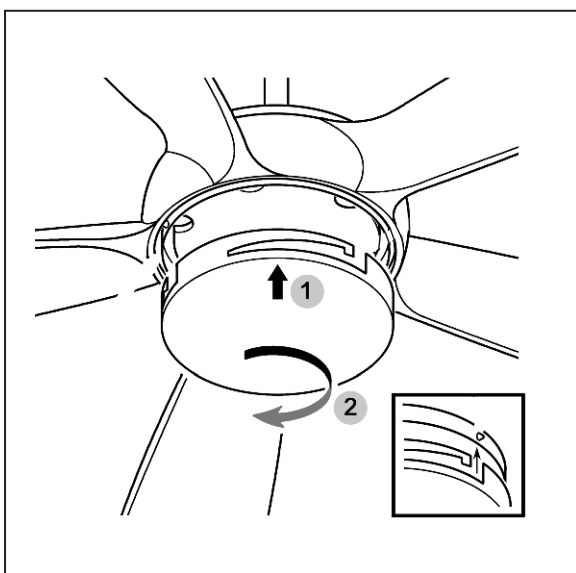
Please see page 12 for indicate function for all the key of transmitter

IMPORTANT : THIS APPLIANCE MUST BE EARTHED.



After testing all the functions of fan are working well, lift the canopy carefully up to hanger bracket, carefully push all wires into the canopy. Take care not to trap any wires. Use the canopy set screws to tighten the canopy firmly.

Lift the canopy ring after canopy screws is tighten.



Put the shade into the light fitter and twist. Ensure the shade is tightened firmly. The shade will fall and break if not installed correctly.

Now, your fan installation is complete.

Blade balancing

Whilst every precaution is taken at the factory to ensure your fan is of the highest quality, imbalance may occur. This may be due to slight irregularities in the blades or blade carriers. Further problems can be caused by deviating from these instructions.

The following procedure may help to rectify the situation.

The hanger bracket must always be tight against the ceiling so that no movement can occur.

Make sure that the rod is firmly locked into the boss on top of the fan. The locking screw should be securely tightened.

Check all the blades are firmly tightened onto motor

Blade tracking can easily be checked by holding a yardstick or similar measure vertically from the ceiling to the tip of the blade. Then check all blades measure the same distance from that point. To correct slight problems in the alignment of a blade, gently bend the carrier to bring it back in line.

Changing over two adjacent blades – may correct any imbalance.

Use the universal balancing kit supplied with the fan.

Please note that drop rod styles of fans do have a slight level of movement but this is in no way dangerous

Care and cleaning

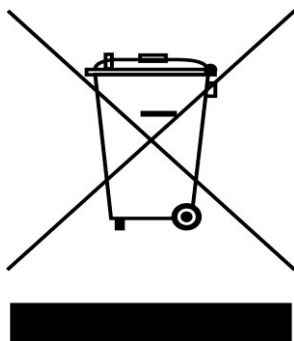
Ensure that periodic checks of the fixings takes place. (see Safety Precaution 9)

Periodic cleaning of your new Fantasia fan is recommended particularly the blades. The plated or painted surfaces of your fan have been sealed with a lacquer to minimize any discoloration or tarnishing. Therefore use a soft brush or lint free cloth to avoid scratching the surface.

The motor has permanently sealed bearings so no lubrication is necessary

Do not use water when cleaning your fan as this could damage the surfaces of the casing and the blades and may create the possibility of a electric shock.

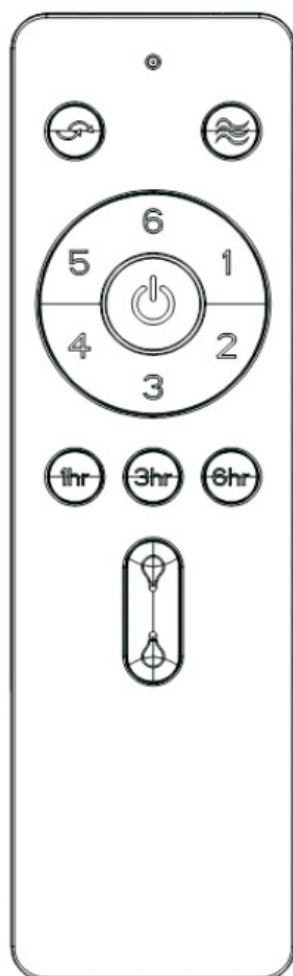
Product Disposal Instructions



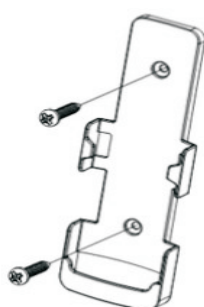
This product has been classed as Electrical or Electronic Equipment and should not be disposed of with other household or commercial waste at the end of its working life.

The Waste of Electrical and Electronic Equipment (WEEE) Directive (2002/96/EC) has been put in place to recycle products using best available practice and minimize the impact upon the environment.

HOW TO OPERATE THE HANDSET (TRANSMITTER)



Battery Replacement:
CR2032 3V



Power off key : Turn off the ceiling fan



Fan speed: Press and release immediately to turn on and set fan speed. No 6. is for the highest speed and No 1 is the lowest)



Light button: ON/OFF - Press and release immediately to turn on or off light.

OR



DIMMER - Press and hold to dim or brighten light to The desired level and release.

(Only when the dip switch was set on "D" dimmer setting)



: The fan and light will turn off after 1 hour automatically.



: The fan and light will turn off after 3 hours automatically.



: The fan and light will turn off after 6 hours automatically.



: **Natural breeze:** Fan speed will modulate to simulate a natural breeze.



: **Reverse button:** Press and release immediately to set fan direction: Summer mode – The fan will provide a downward cooling breeze. Winter mode – The fan will push warm air down by providing an upward breeze.

INSTALLING WALL MOUNTED HOLDER

Attach wall mounted holder using the two provided screws

NOTE :

1. Please allow a moment between each operation.
2. Please handle the transmitter with care, be sure not to drop or expose it to water, high humidity or place where is too close to a heating element. Improper handling may result in malfunction and void the warranty.
3. The remote control is operated by Radio Frequency, so, it won't be necessary to point this unit at the ceiling fan while activating the handset functional button.

Ceiling Fan Warranty.

You must have the original purchase receipt or bill of sale to make a warranty claim. No claim will be accepted unless proof of date of purchase is available at the time of making the warranty claim.

Ceiling Fan Warranty Period.

The ceiling fan itself, excluding accessories such as the Remote Control Transmitter and Receiver, is covered by a 10 year warranty. During this period, Fantasia Distribution Ltd will, at its discretion, repair or replace defective product. During this 10 years, the owner is responsible for labour costs incurred in removing and re-installing the fan, and for transport costs to Fantasia Distribution Ltd's repair centre. Return freight will be paid by Fantasia Distribution Ltd. The cost of obtaining or using special access equipment (scissor lifts, scaffolding etc.) is specifically excluded, and it is the responsibility of the owner to provide such equipment and have it safely installed and operated.

Remote Control Warranty Period.

Fantasia Distribution Ltd's Remote Control Receivers and Transmitters (Handsets) are covered by a 2 year repair or replacement warranty

Balance of Warranty on Repaired or Replaced Products.

Any replaced or repaired product is covered only by the balance of the warranty remaining on the original article.

Transfer of Warranty.

If the dwelling where the fan or remote control is installed changes hands, the balance of the warranty passes to the new owner, providing the original bill of sale for the product is retained by the new owner.

Warranty for the fan does not cover damage to the fan if it is moved from one dwelling to another during the warranty period. The warranty is voided in total if the product is sold as second hand goods.

The following is NOT covered by warranty.

1. Any damage incurred after delivery to the owner that is not caused by a fault in the products materials or workmanship; damage from lightning or power surges; incorrect installation; damage due to incorrect installation; water damage of any kind; installation or use outdoors; damage arising from connection to or use with alternative power systems (e.g. inverters, solar, etc.).
2. Ceiling fans not installed by a qualified electrician.
3. Repair of a ceiling fan used incorrectly, accidentally damaged, modified in any way or not serviced in accordance with the maintenance instructions.
4. The cost of transporting and insuring the ceiling fan between the nearest Fantasia Distribution Ltd agents' service depot and its normal location.
These costs must be met by the purchaser
5. Subject to any statutory provisions to the contrary, claims for damage to furniture, carpet, walls, ceilings, foundations or any other consequential loss either directly or indirectly resulting from a faulty ceiling fan.
6. Fantasia Ceiling Fans not purchased and installed in Mainland UK.
7. A service fee will be charged where; there is nothing wrong with the ceiling fan or; the defective operation of the ceiling fan is due to failure of electricity or; the installation is not in accordance with Fantasia Distribution Ltd instructions and/or applicable local regulations or; the defects have been caused by incorrect application or abuse of the ceiling fan or; the damage has been caused by unauthorised persons attempting to repair the fan.



137CM/54"

Sirocco

FANTASIA DISTRIBUTION LTD.

Unit B. The Flyers Way, Westerham, Kent, TN16 1DE

Tel : (01959) 564 440 Fax : (01959) 564 829

E-mail : technical@fantasiaceilingfans.com

Fantasia ceiling fans - Warranty Activation Form

To activate your warranty please complete this form, and post it back to us at Fantasia

Name.....

Address.....

Town.....

Post Code.....

Email.....

Purchased from.....

Date Installed.....

Please tick this box if you would like to receive updates on:

The Fantasia Elite Range ☐

The Fantasia Standard Range ☐

1. How did you first hear about Fantasia Ceiling Fans?

Shop Display ☐

Brochure ☐

Friend's Recommendation ☐

Web Search ☐

Other.....

2. In which room is your fan installed?

.....

3. What do you think would be a good name for a ceiling fan?

.....

*£50 to the owner of any suggestions used!

4. Do you consider a ceiling fan to be a good alternative to air conditioning?

Yes ☐

No ☐

5. Do you intend to use the reverse function of your ceiling fan in Winter?

Yes ☐

No ☐

6. What do you like most about Fantasia Ceiling Fans?

.....

Thank you for answering these questions.
Your answers will help us excel in customer service and product development

I have read the terms of the warranty and agree to adhere to them

Print.....

Signed.....

Date.....





137CM/54"

Sirocco

Please cut out this warranty page and send it in an envelope to the address below.

Alternatively please go to our website www.fantasiaceilingfans.com and fill in the warranty section there.

FANTASIA DISTRIBUTION LTD.

Unit B. The Flyers Way, Westerham, Kent, TN16 1DE

Tel : (01959) 564 440 Fax : (01959) 564 829

E-MAIL: info@fantasiaceilingfans.com

CSA19070402